

## N.TOP

### 802.11n Ceiling Mount Long Range PoE AP

- 300Mbps 2T2R Wireless b/g/n Standard
- Up to 27dBm output power (limited to 20dBm in EU, 23dBm in U.S.)
- Built-in MIMO Antennas
- 1 x 10/100 Ethernet Port with IEEE 802.3af PoE support
- Support WPS Button for Easy Setup.
- 5 Wireless Modes
- Green WLAN for Power Saving
- Support Wireless Access Control, Multiple SSID, Virtual AP, VLAN
- Support Wireless Client Limit, Client Isolation and Watchdog

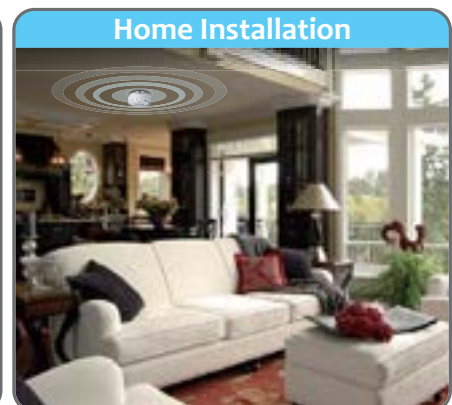
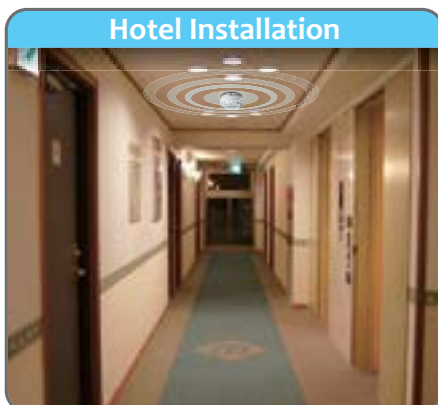


**A**irLive N.TOP is 2T2R MIMO Wireless-N Ceiling AP with data rate up to 300Mbps, it built-in IEEE 802.3af PoE to deploy the PoE network environment that reduces the complexity wiring and easy-to-install into the existing network environment. With different wireless modes, N.TOP not only fully fulfill to different application and also expand wireless coverage.



### Smoke Detector Appearance Wireless AP

AirLive N.TOP use smoke detector appearance, it minimizes visibility for any type public areas, such as enterprise, government, campuses, hotels, restaurant, coffee shop, clinic and hospital..etc.



### 300Mbps Wireless N, Up to 5x More Distance!

The N.TOP is the first ceiling mount AP that features both MIMO and long range radio that can deliver up to 27dBm of output power(limited to 20dBm in EU and 23dBm in the U.S.). This combination creates an AP delivers both long distance and wide coverage than conventional AP. In addition, it has maximum throughput of 300Mbps and is completely backward compatible with 11g/b devices.

Manufacturer

**OvisLink Corp.**

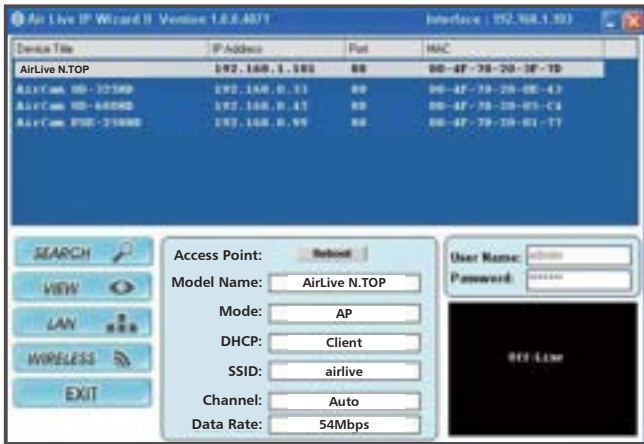
5F, No.96, Min-Chuan Rd., Hsin-Tien Dist., New Taipei City 231, TAIWAN

[www.airlive.com](http://www.airlive.com)

## 802.3af PoE Ports\*

Despite of its small housing, AirLive managed to put one Ethernet port into the N.TOP, and it function as PoE port. The PoE port can accept PoE input 48Volts so you can use AirLive's 802.2af POE Injector (AirLive POE-48PB) or PoE switch is required for PoE installation.

\* Optional 802.2af POE Injector (AirLive POE-48PB) or PoE switch is required for PoE installation.

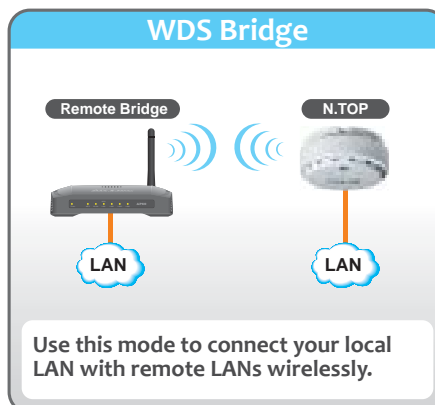
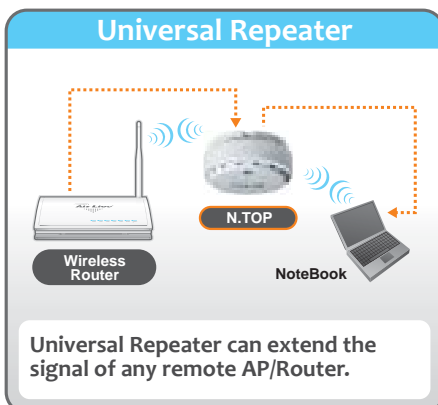
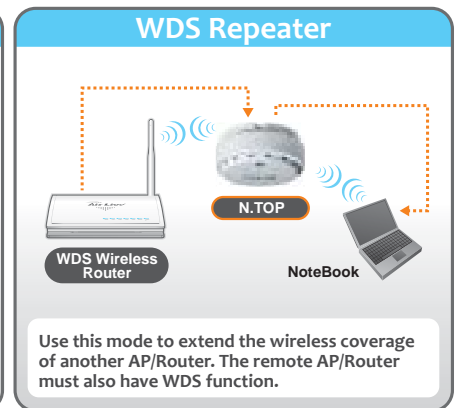
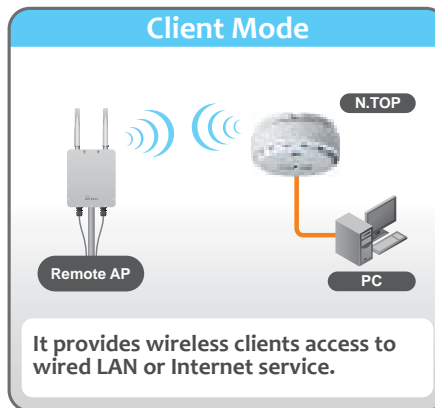
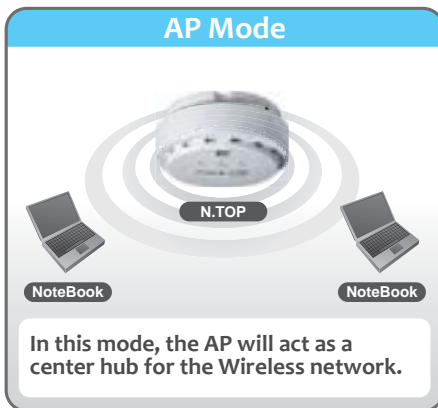


## IP Finder Management

The AirLive N.TOP works with AirLive IP Finder Utility. Therefore, you can manage AirLive IP Cameras and N.TOP together in the simple to use utility. You can discover AP and IP Cameras, then change IP, password, SSID, and encryption.

## 5 Wireless Modes

The N.TOP offers user friendly easy- to-use interface that is standard on all AirLive AP, so you can get started easily. In addition, 5 wireless modes are featured so you AP can work in different application environments.



## Multiple SSID, Wireless Scheduling, and Green AP

AirLive N.TOP provides multiple SSID capability so you can create up to total of 4 virtual APs. With the wireless scheduling feature, you can pre-configure the N.TOP before you leave your office or home, so when the time is up, the N.TOP will start to execute the routine jobs automatically, it will reduce the power loading and save your bill. The N.TOP is also a green AP which only use about half the power consumption comparing to other APs in the same class.

### Specifications

#### Hardware

- 1 x 10/100 Mbps Ethernet Port with Auto MDI/MDI-X Support
- 802.3af PoE Port (LAN) LAN, WLAN, PWR, Reset/WPS LED Indicators
- 300Mbps 2T2R 11b/g/n Radio
- 2MB Flash, 16MB SDRAM
- Reset/WPS Button

#### Antenna

- PiFa Antenna x 2 (2T2R MIMO Technology)

#### Frequency Range

- 2.4000~2.4835GHz (Industrial Scientific Medical Band)

#### Receiver Sensitivity

- 802.11b 11Mbps  $\leq$  -88dBm +/- 1
- 802.11g 54Mbps  $\leq$  -75dBm +/- 1
- 802.11n HT20 MCS7  $\leq$  -72dBm +/- 1
- 802.11n HT40 MCS7  $\leq$  -68dBm +/- 1

#### Data Rate

- 11n (40MHz): MCS0-7, up to 300Mbps
- 11n (20MHz): MCS0-7, up to 144Mbps
- 11g: 6, 9, 12, 24, 36, 48,54Mbps
- 11b: 1, 2, 5.5, 11Mbps

#### Modulation

- 802.11b: DSSS(DBPSK, DQPSK, CCK)
- 802.11g: OFDM(BPSK, QPSK, 16-QAM, 64-QAM)
- 802.11n: OFDM(BPSK, QPSK, 16-QAM, 64-QAM)

#### Output Power

- ETSI (Europe) - About 20dBm max
- FCC (The United States) - About 23dBm max
- South America - About 27dBm max

#### Security

- 64/128-bit WEP
- WPA/WPA2-PSK support
- 802.1x Radius Support

#### Software

- Web-Based Management
- Setup Wizard
- Support WPS Button for Easy Setup
- Multiple SSID, Virtual AP, Watchdog, Hidden SSID, VLAN
- ACK Timeout Adjustment
- WMM, MAC Access Control, Wireless Client Isolation, Channel, RTS Threshold
- Green AP Energy Saving Feature
- TX Output Power Adjustment
- Wireless Mode: AP, Client, WDS Bridge, WDS Repeater and Universal Repeater
- Wireless Security: WEP- 64/128bit, WPA, WPA2 and IEEE 802.1x
- Restore to Factory Default
- Configuration Backup and Restore
- Firmware Upgradeable via Web Management

#### Environmental

- Operating temperature: 0~40 Degree C
- Operating humidity (non-condensing): 10~90%
- Storage temperature: -20~60 Degree C
- Storage humidity: 95% Max

#### Power Supply

- 5VDC, 2A Switching Power Adapter

#### EMI

- FCC, CE

#### Product Weight

- 143 g

**Product Size (L x W x H)**  
- 105 x 105 x 46 mm

**Ordering Information:**

<b>AirLive N.TOP</b>	802.11n Ceiling Mount Long Range PoE AP, ETSI
	802.11n Ceiling Mount Long Range PoE AP, FCC
	802.11n Ceiling Mount Long Range PoE AP, South America